

Ridgeback™

Isoclast™ active

INSECTICIDE

Novel and trusted control of yield-robbing insects



Ridgeback™ insecticide combines the novel active ingredient, Isoclast™ active, with the trusted power of bifenthrin for broad-spectrum soybean pest control when quick knockdown matters most. Growers will be able to target many pests using Ridgeback including soybean aphids, Japanese beetles, spider mites and other pests with two modes of entry – contact and ingestion. This makes Ridgeback a valuable long-term resistance management tool, helping soybean growers maximize productivity and profitability.

		Recommended rate range (fl oz / A)
Soybean	Key Pest	
	Bean leaf beetles	8.6 – 10.3
	Japanese beetle (adults)	
	Soybean aphid*	8.6 – 10.3
Twospotted spider mite	11.0 – 13.8	

See label for full list of pests controlled.

Spray volume: minimum 5-10 gallons per acre (GPA) by ground, minimum 3 GPA by air.

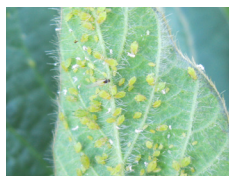
* If pyrethroid resistant soybean aphids are known to be present, use 10.3 fl oz / acre of Ridgeback.

For fields with pyrethroid-susceptible soybean aphids plus other secondary pests of soybean (e.g., Japanese beetle, bean leaf beetle, lepidopteran larvae) the suggested use rate is 8.6 fl oz / acre.

Use a higher rate in the rate range for heavy pest populations.

Attribute	Soybean
Preharvest interval	18 days
Min. treatment interval	30 days
Max total use rate /acre / year	41.3 fl oz
Max number of applications / year	4
Max consecutive application	2

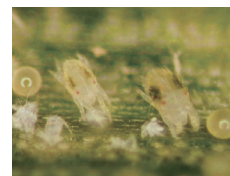
Other use recommendations/restrictions: If pyrethroid resistant soybean aphids are known to be present, apply 10.3 fl oz / acre



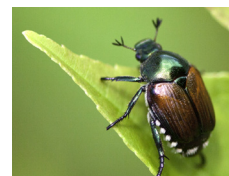
Soybean aphid



Bean leaf beetle
Photo from Marlin E. Rice



Twospotted spider mite



Japanese beetle (adults)

Key biological attributes

Ridgeback combines the proven efficacy of two active ingredients in an easy-to-use formulation. Ridgeback insecticide offers increased control efficacy and expanded spectrum on target pests.

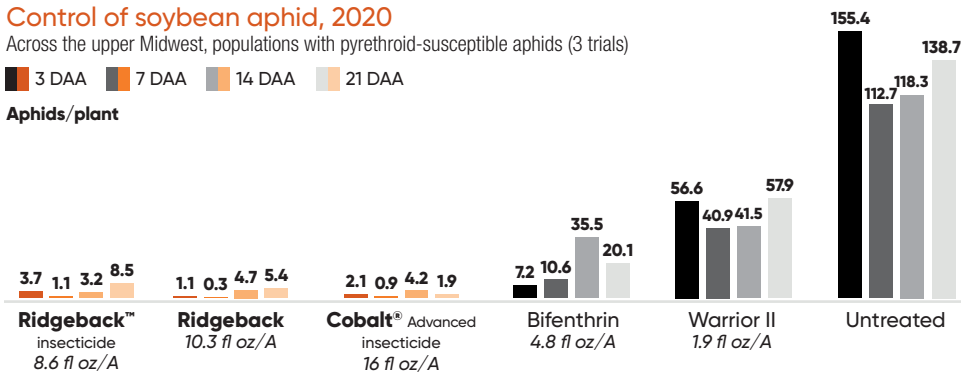
Attribute	Ridgeback™ insecticide
Pest Spectrum	Sap-feeding and chewing insect pests and mites
Mode of Uptake	Ingestion and contact
Modes of Action	Includes a novel Group 4C chemistry that will control sap-feeding pests with resistance to other modes of action and a Group 3A chemistry providing a broad spectrum of control of chewing insect pests, mites, and added control of sap-feeding insect pests.
Translaminar Activity	Isoclast® active - yes
Knockdown Efficacy	Depending on the species, cessation of feeding within hours
Residual Efficacy	Up to 21 days (varies by species)

Control of soybean aphid, 2020

Across the upper Midwest, populations with pyrethroid-susceptible aphids (3 trials)

3 DAA 7 DAA 14 DAA 21 DAA

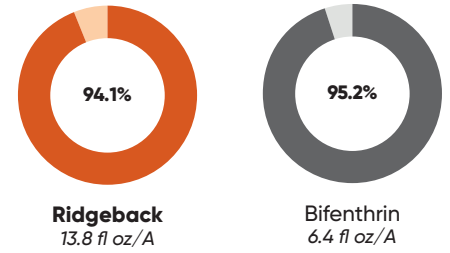
Aphids/plant



Control of twospotted spider mite

Oklahoma State University, 2019

Control 7 DAA

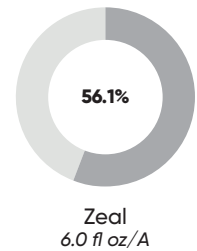
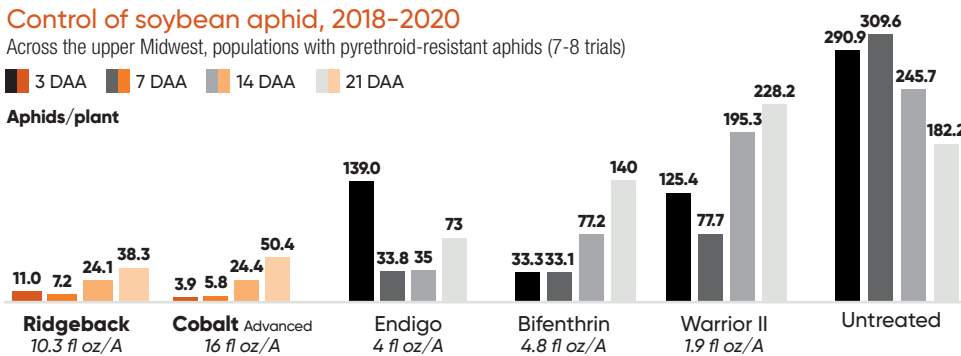


Control of soybean aphid, 2018-2020

Across the upper Midwest, populations with pyrethroid-resistant aphids (7-8 trials)

3 DAA 7 DAA 14 DAA 21 DAA

Aphids/plant

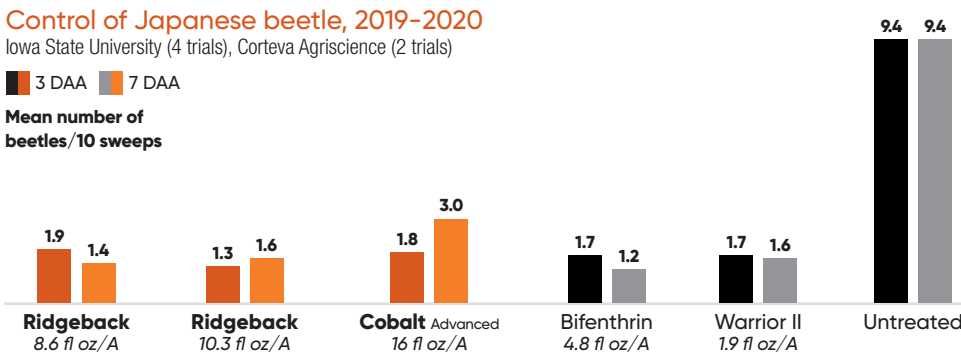


Control of Japanese beetle, 2019-2020

Iowa State University (4 trials), Corteva Agriscience (2 trials)

3 DAA 7 DAA

Mean number of beetles/10 sweeps

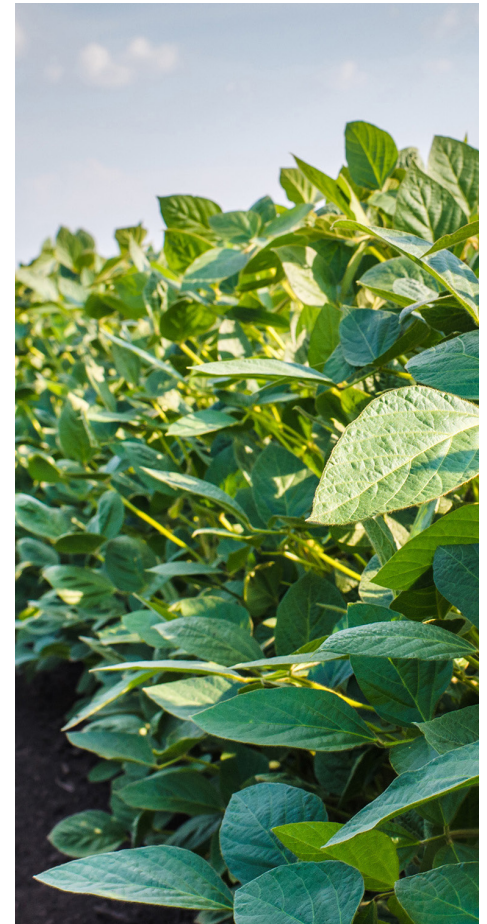
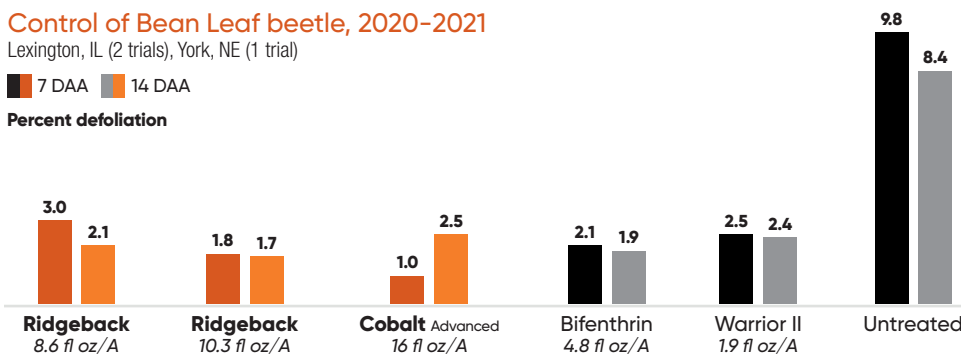


Control of Bean Leaf beetle, 2020-2021

Lexington, IL (2 trials), York, NE (1 trial)

7 DAA 14 DAA

Percent defoliation



Visit us at corteva.us



This reference guide is not intended as a substitute for the product label for the product(s) referenced herein. Product labels for the above product(s) contain important precautions, directions for use, and product warranty and liability limitations, which must be read before using the product(s). Applicators must be in possession of the product label(s) at the time of application. Always read and follow all label direction and precautions for use when using any pesticide alone or in tank-mix combinations.

Ridgeback™ is not registered for sale or use in all states. Contact your state pesticide regulatory agency to determine if a product is registered for sale or use in your state. Always read and follow label directions. ©2021 Corteva. CA01-467-022 COR REV(10/21)

™ Trademarks of Corteva Agriscience and its affiliated companies. Cobalt Advanced is a Restricted Use Pesticide.