

No one protects your cereal crop like Corteva Agriscience™.

Straxan™ fungicide seed treatment delivers powerful protection against early season seed and soil-borne diseases in a ready-to-use and easy-to-apply formulation. Pair with Lumivia™ CPL insecticide seed treatment for the broadest insect control and Win the Start.

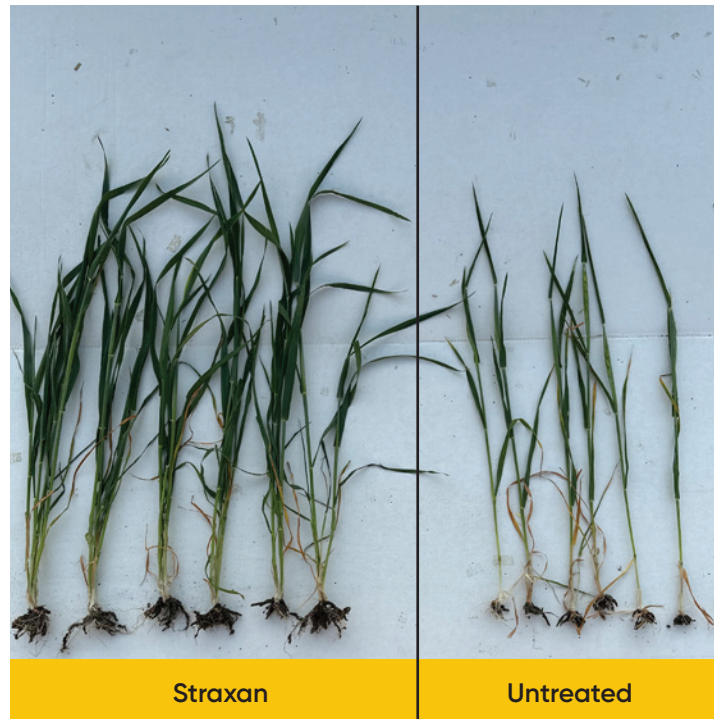
STRAXAN™ ADVANTAGES

- Provides excellent seedling protection against early season seed and seedling diseases to maximize crop stand establishment and yield potential.
- Ready-to-use and easy-to-apply formulation for complete seed coverage and treating flexibility.
- Excellent partner for Lumivia™ CPL, which provides the broadest cereal insect protection, including wireworm and cutworm.
- Straxan extends Corteva's industry leading cereal solutions portfolio, delivering cereal protection you can trust throughout the season.

Straxan provides powerful protection from yield robbing diseases like *Fusarium graminearum* and true loose smut.



Medicine Hat, June 2023



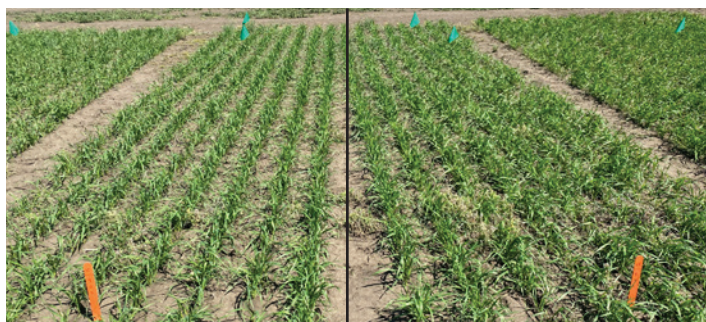
St. Albert, June 2023

Straxan increases plant count and stand establishment, maximizing the potential of your cereal crop.

Straxan™ and Lumivia™ CPL can be combined to create a premium cereal seed treatment package, delivering outstanding protection.

LUMIVIA CPL ADVANTAGES

- Provides the broadest early season insect protection in cereals to help maximize plant stand count and yield potential.
- Reduces the build-up of pest populations.
- Highly systemic movement, providing seedling protection up to 35-40 days after seeding.
- Improves vigour, biomass and stand establishment for more even crop staging and harvest establishment.
- Unique mode of action (Group 28), with a favourable environmental profile.



Standard Seed Treatment

Straxan + Lumivia CPL



Standard Seed Treatment

Straxan + Lumivia CPL

Osler, SK June 2023

Portage La Prairie, MB June, 2023

Lumivia CPL is the only cereal seed treatment that controls cutworms.

Rates

	Lbs /Bu	Straxan				Lumivia CPL		
		Rate (per 100kg Seed)	Rate (ml/bu)	Bushels / 9.5L jug	Bushels /113.5L drum	Rate (per 100kg Seed)	Rate (ml/bu)	Bushels /3.5L jug
Wheat/Durum	60	325	88.5	107	1280	40	10.9	320
Barley	48	325	70.8	133	1600	40	8.7	400
Oats	32	325	47.2	200	2400	40	5.8	600

The number of bushels treated will vary depending on the test weight of the seed. Always calculate seed density before treating.

Packaging

Straxan	Lumivia CPL
2 x 9.5L Case	4 x 3.5L Case
113.5L Drum	52L Keg

- 3 jugs of Straxan pairs with 1 jug of Lumivia CPL.
- 1 drum of Straxan pairs with 1 case (4 jugs) of Lumivia CPL.

