



Grassland and Maize Agronomy Update

February 2021



Welcome to the Corteva Agriscience™ Grassland and Maize Agronomy Update.

Welcome to the first update for the 2021 grassland and maize season.

These regular technical notes are a seasonal commentary to help those interested in improving grassland and forage productivity on dairy, beef, sheep and equestrian enterprises.

Don't forget to claim your 2 CPD points for subscribing to this newsletter. If you are not a subscriber and want to sign up then please go to: <https://www.corteva.co.uk/contact-us/sign-up.html> and complete your details.

You can unsubscribe at anytime by emailing:

cortevauk@corteva.com

Contents

- FarmMoreForage
- Grassland herbicide decision tree
- BASIS points opportunity
- Forefront T approval status for 2021
- Forefront T Stewardship Record Management Tool Update
- Maize PACTS trial results 2020/21
- N-Lock™
- Pioneer® brand silage inoculants approved for organic approval
- Chickweed – the early focus
- IPM voluntary initiative
- FAQs

Farm More Forage

FarmMoreForage signposts the cycle we can influence to improve the production of home grown forage.

In a world that increasingly cares about production methods, the environment and sustainability, our livestock farmers and their grass based production systems have a strong play in delivering consumer preferences that meet these concerns.

Based on three core phases, FarmMoreForage provides a framework to have a more considered discussion with livestock farmer clients on agronomy areas that can be influenced for optimal gain.

- **Sow:** Our maize hybrids profiled in PACTS (Pioneer Accurate Crop Testing System) gives you the depth & understanding of field performance of many different varieties with many different traits to select what is right for your farmer customer
- **Nurture:** Enhance grass and maize quality and quantity by effective removal of weeds to optimise establishment and maximise yield
- **Improve:** Improve silage quality and reduce losses with the Pioneer range of market-leading inoculants and further, enhance the use of nitrogen in your maize crop with our stabilizer technology.



We are investing in people to create a dedicated Forage Team focused on bringing together these technologies, future innovation and expertise to drive excellence in forage agronomy.

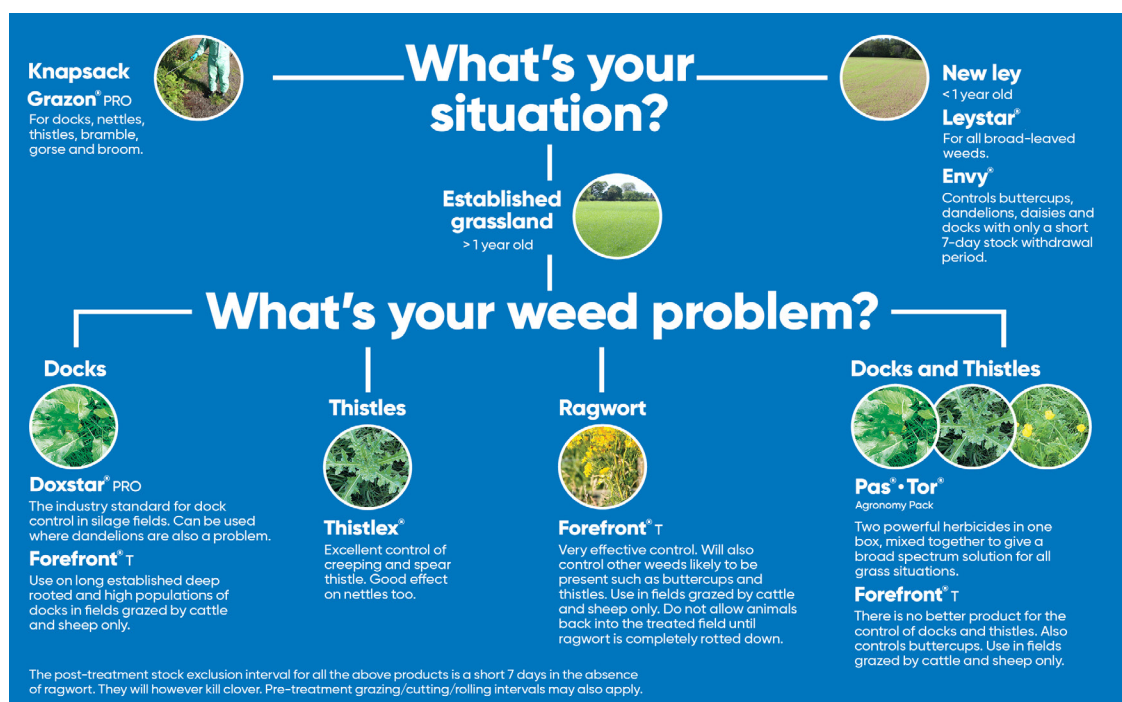
With this platform we can better support you to provide a valued service offer to your clients.

We are updating our Grassland APP to a Forage APP to reflect these ambitions. We have also launched a new forage platform on our website, which contains a number of resources to help maximise the quality and quantity of homegrown forage, including weed tables, decision trees and tech sheets. To see more, go to: www.corteva.co.uk/forage.html

Grassland herbicide decision tree

We have produced a decision tree tool which enables users to find the best treatment solutions for grassland weeds in different situations, whether it is a new ley or established grass, for grazing or cutting fields, or for boom or hand-held application.

The decision tree is also available on the [forage website](http://forage.corteva.co.uk).



BASIS Points Opportunities

With the lack of public events and shows, some agronomists may be finding it harder to obtain BASIS CPD points this year. There are a number of opportunities to gain BASIS points from Corteva's forage portfolio – points are available for subscribing to the Grassland and Maize Agronomy newsletter, downloading and using the new Forage App, completing online learning modules, attending virtual technical briefings with our team, and Pioneer demo days and briefings.

Forefront® T Stewardship Record Management Tool

All agronomists who have made recommendations for Forefront T to clients during 2020 are reminded that these must be recorded in the Forefront T Stewardship Record Management Tool which is found in the "Stewardship" section of the Forage App.

It is a condition of our Forefront T product registration that detail of all sales are made available to CRD, if

required. For this reason, it is also a Condition of Supply of the product to our customers that these records are kept. We would ask that you ensure that your records are up to date. We will be auditing the database in the coming month, so would ask that you do this task ASAP.

Forefront® T Approval Status For 2021

The Forefront® T (MAPP no 15568) product authorisation is undergoing a renewal assessment but is running late.

Consequently, we have now secured an extension for the current authorisation such that the current revocation notice has been extended as follows:

- (a) 31 October 2021 for sale and distribution of existing stocks
- (b) 31 October 2022 for the disposal, storage and use of existing stocks

2020/21 Pioneer® PACTS trials results and highlights

The 2020 results from the annual Pioneer Accurate Crop Testing System (PACTS®) trials show Pioneer's newest hybrid, P7948, offers farmers impressive yields for both livestock forage and biogas production.

For farmers looking for the best hybrid for favourable sites to suit their ground and weather conditions this year, P7948 ticks some important boxes. P7948 gives exceptional yields for its maturity. Over three years and across 18 trial sites, P7948's dry matter yield was 12.8% above the control on favourable sites.

Over the same three-year period, it was also grown under film across 11 sites. A high silage yield was seen here too, with a DM content higher than the high dry matter control.

Other results in this year's PACTS® trials show the ongoing success of Pioneer's earliest maturing varieties, P7326 and P7034. P7326 is attractive to farmers wanting good, early yields of high-quality silage, from a crop that reaches 30% DM quickly.

P7034 offers benefits more commonly associated with maize grown in warmer conditions. P7034 is a dent type variety that possesses starch that's easier for rumen bacteria to degrade and makes energy more available. P7034 has

been bred specifically for the cool and maritime conditions found in the UK and Ireland and has given improved silage yields and quality across PACTS® trial sites in all but the coldest maize growing areas of the UK and Ireland.

Download the 2020/21 PACTS book [here](#).

PACTS IS NOW AVAILABLE TO DOWNLOAD.

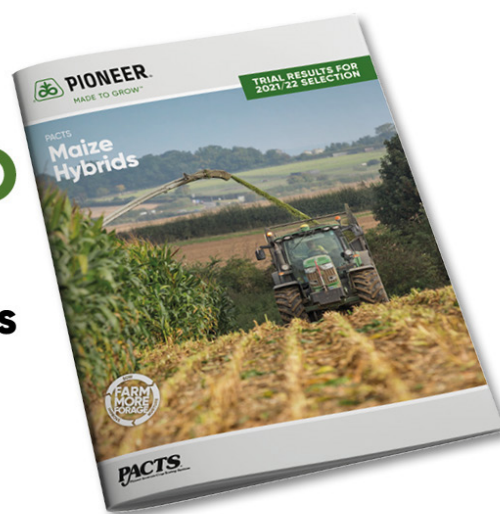
Get the full trial results for 2021/22 selection.



'Test the Best' scheme

If you have a farmer client who may be interested in trying a Pioneer maize hybrid for the first time, we run a 'Test the Best' scheme.

To find out more or to apply, please contact testthebest@corteva.com or visit [here](#) to join the Pioneer Business Club.



Pioneer® brand silage inoculants are now approved for use on organic farms

Since the 1970's Pioneer have been at the forefront of silage inoculant technology. While the first inoculants, such as 1188, focused on improving fermentation quality newer crop specific products have been developed that further improve feeding quality and reduce aerobic losses.

Pioneer developed a novel strain of *Lactobacillus buchneri* that produces specific enzymes that improve fibre digestion. This strain also improves aerobic stability of the silage face during feed-out. This strain discovery led to the development of the fibre technology range of products that include Pioneer Brand 11GFT for grass and Pioneer Brand 11CFT for maize.

More recently still Pioneer developed a fast-acting strain of *Lactobacillus buchneri* called Rapid React®. This strain, included in products such as Pioneer Brand 11G22 and 11C33 speeds up the onset of aerobic stability.

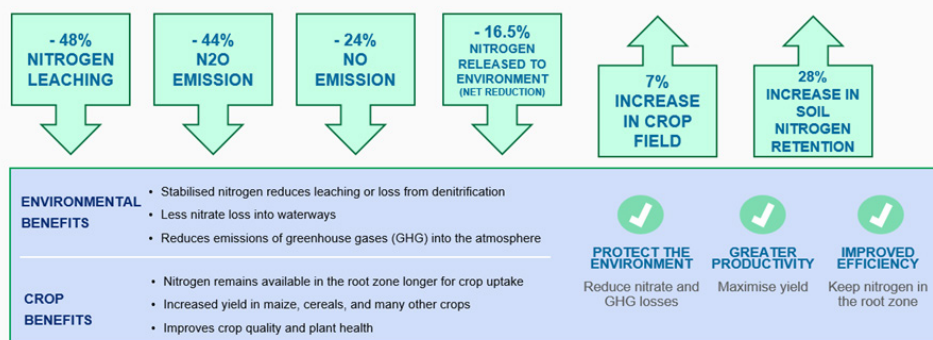


Introducing N-Lock™

Now is the time to start planning fertiliser inputs. There is a lot of interest in making better use of nitrogen, and how to make more nitrogen available later in the growing season, which can increase yield and quality of the crop.

N-Lock™, containing Optinyte™, does these things. Optinyte stands for "Optimise nitrogen". It is a nitrification inhibitor, delaying the conversion of ammonium to nitrate, keeping more nitrogen in the soil for longer as demonstrated in the diagram below.

BENEFITS OF OPTINYTE™ TECHNOLOGY



N-Lock is ideal for use on maize and is easy to apply – it can be applied through a crop sprayer and is compatible with many commonly used crop protection inputs, including liquid fertilisers. It can also be mixed and applied with slurry.

Chickweed – the early focus

Early spring is when chickweed begins to emerge and smother grassland. Its prostrate growth allows it to rapidly colonise any gaps in grassland.

Chickweed is the most common weed of new sown leys. It will aggressively compete with grass species for space, light, water and most importantly nutrients and so needs to be controlled. Chickweed will also be found in established grassland, often in damaged swards or where slurry injectors open up the sward allowing chickweed to colonise.

Individual chickweed plants can produce up to 1300 seeds and it only takes five to six weeks from germination to seed dispersal. Plants are capable of four to five generations a year and seed buried in soil can remain viable for up to 25 years, so it's not a weed to ignore.

Use *Envy*®, which works at lower temperatures than other solutions, and can be sprayed from now until the end of November.

Florasulam, one of the two active ingredients in *Envy* allows it to work at cooler temperatures. This means, if ground conditions allow spraying can be done before the chickweed flowers and before it significantly impacts grass growth.

Envy can be used on chickweed at 1.0 L/ha in new sown leys and in Established Grassland. If other weeds are present in Established Grassland, the rate can be increased to 1.5L/ha or 2.0L/ha. Removing chickweed in young leys allows productive grasses to tiller out and spread across the ground, so if chickweed is present plan a spray before it becomes a problem.

Envy has excellent grass safety, is rainfast in two hours and has a stock exclusion period of just seven days. *Envy* is also an excellent herbicide for buttercups and dandelions, but it will kill clover.

Ask a question

Q What is the best solution for early season chickweed control in grassland?

A *Envy* works better in cooler conditions than straight fluroxypyr, so chickweed can be controlled before it starts affecting the growth of the ley.

Q What application rate should *Envy* be used at for chickweed control?

A Use *Envy* at 1.0 L/ha in new sown leys and in Established Grassland. If other weeds are present in Established Grassland, the rate can be increased to 1.5L/ha or 2.0L/ha.

Q What is the deadline for getting my *Forefront T* Stewardship records up to date in the App?

A There is no deadline. However, the *Forefront T* Stewardship Record Management Tool should be completed prior to supplying product as it sends a Stewardship Contract to farmer customers which they must have time to read and turn down if they wish to. If you have fallen behind with your records for 2020, please make all effort to get them up to date before the start of the 2021 season. If other weeds are present in Established Grassland, the rate can be increased to 1.5L/ha or 2.0L/ha.

IPM Voluntary Initiative

The Voluntary Initiative are conducting a survey to improve IPM practices and help farmers meet the requirements of the Sustainable Use Directive. If you have any grassland farmers who would like to be involved please direct them to <https://www.nfuonline.com/cross-sector/science-and-technology/crop-protection/crop-protection-must-read/time-to-fill-in-your-integrated-pest-management-pl/> where there is an option to complete the IPM Plan for Grassland Crops.

Earn BASIS Points.

2 BASIS points (1 crop protection and 1 personal development) will be awarded to those subscribing to Grassland and Maize Agronomy Update.

Please include course name 'Grassland Agronomy Update' and ref number: CP/84141/1920/g, on your training record and send to:

linda@basis-reg.co.uk

These details are valid until 31st May 2020.



For regular updates on agronomic issues, find us on Twitter: <https://twitter.com/CortevaForage> and Facebook: facebook.com/cortevauk

For further information please contact the Corteva Agriscience technical hotline on 0800 689 8899 or UKHotline@corteva.com, go to www.corteva.co.uk/forage.html

