

Arable Update

MAY 2020

In this edition

- Dow Shield® 400 on sugar beet
- Weed control and spring cereals
- Technical support goes mobile

PX131 Pioneer Maximus Semi Dwarf Hybrid

PX131 is a new top yielding Pioneer Maximus semi-dwarf hybrid from Corteva that has been newly added to the 2020 AHDB Descriptive List.

Like all Pioneer semi-dwarf hybrids it has a height of around 123cm and exhibits the classic semi-dwarf characteristics that growers who favour this plant type have come to prefer. PX131 develops vigorously in the autumn but with a spreading growth habit due to its lower more protected growing point. PX131 is very suited to early sowing as it will not enter the winter overly tall and vulnerable. As it develops in the spring at a target plant population of 20-30 plants per square metre it will produce

a branching growth habit that allows for even ripening and easy harvesting.

A score of 7 for light leaf spot and 6 for stem canker ensures PX131 will deliver robust overall disease resistance.

In addition to its unique growth habit and ease of management PX131 boasts the highest oil content of any variety on the AHDB 2020 Recommended or Descriptive List. This oil content is likely to deliver the best oil bonus payments available as the table below shows.

With the new Corteva herbicide **Belkar®** offering outstanding opportunity for more effective post emergence weed control the UK Oilseed Grower has new technology that provides real opportunity for a healthy crop – and an even healthier return.



Oil Bonus Projection from AHDB Recommended & Descriptive List Results 2020/21



Potential Oil Bonus Payments PX131 vs Top Gross 5 Output Varieties on the AHDB RL

Variety	Seed Yield	Oil Content	Seed Yield	Oil Bonus Payment	Oil Bonus Payment
	Index as % of control	%	t/ha	£ per tonne	£ per ha
PX131	97.0%	46.7	4.53	£32.16	£145.68
Acacia	109.0%	45.7	4.98	£27.36	£136.29
Ambassador	108.0%	45.3	4.89	£25.44	£124.46
Aurelia	108.0%	45.2	4.88	£24.96	£121.84
Artemis	107.0%	45.7	4.89	£27.36	£133.79
Aspire	106.0%	45.7	4.84	£27.36	£132.54

Figures based on a crop grain value of £320/tonne, and an oil bonus payment of 1.5% for every % above 40%. Data Source: AHDB Database

Dow Shield[®] 400 on sugar beet

With one-year sugar beet contracts at £19.60, no crop tare deduction and 20.99/t on a crowned basis, growers must focus to get as much tonnage off the field as possible with a sensible strategy that will do no harm to protecting their CTE (contract tonnage entitlement) too.

Sugar beet develops slowly and is a very uncompetitive crop, allowing weeds with a high biomass to compete with the establishing crop. Broad-leaved weeds especially thistles and volunteer potatoes, those that grow high above the canopy, will compete with the crop for light and nutrients.

Overall, it has been a relatively mild winter and winter frosts are not expected to have killed many daughter potatoes. It is widely held that 5 potato volunteers per metre square can result in a yield loss of up to 16.5 tonnes/hectare (circa £323/ha loss) and in addition be a source of potato blight and potato cyst nematode. Control of these volunteer potatoes is therefore important not

just for the sugar beet crop but also for surrounding potato crops and the rotation. **Dow Shield[®]400** ideally applied in sequence of 2 x 0.25L/ha with about 7-day gap is the go to strategy for the control of volunteer potatoes in sugar beet.

Only one thistle (a tall weed) per metre square can impact yields by as much as 11%. Dow Shield contains clopyralid and is very active against *Compositae* weeds such as thistles. Ideally a programmed approach of 0.25L/ha, which knocks out apical dominance

stimulating fresh growth from the thistle in response, followed by 0.5L/ha which will finally kill the weed. If only one spray opportunity is planned, then a single application at 0.5L/ha is the route to go.

Finally, don't forget, if there is a simple broadleaved weed problem, the addition of 0.25L/ha of Dow Shield to the mix will boost the performance i.e. broaden the spectrum and activity of the whole mix.

Up for grabs!

We're giving sugar beet growers the chance to win one of twenty fantastic Dow Shield messenger bags in our FREE prize draw. To enter, visit my.corteva.com/DowShield400 and complete your details by 30th June 2020.



Prize draw closes 5pm 30.06.20: Winners will be notified by 15.07.20 using the details provided on the competition form. See website for full T&Cs. Product image for illustration purposes only.

Weed control and spring cereals

After a good splash of rain across the country, spring cereal crops are now romping through the growth stages. The moisture has also given a boost to the weeds species too, with many spring cereal crops full of emerging weeds.

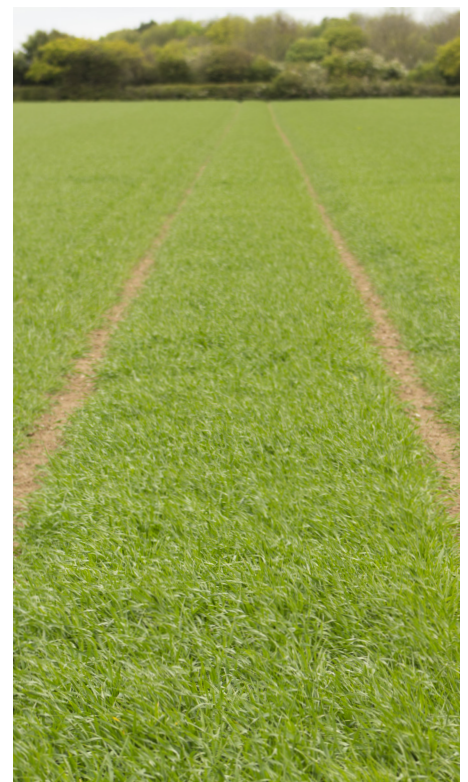
In spring barley crops, the most difficult to control weeds include cleavers, fumitory, chickweed, fat-hen, black bindweed and the Polygonum species. If these weeds are left uncontrolled, they can interfere with harvest, reduce the quality of the grain and compete with the emerging crops for nutrients.

Now is the optimum time to apply your herbicides programme, and for good broad spectrum weed control Arylex[™] based herbicides should form the backbone of your herbicide strategy.

Pixxaro[®] EC EC (formulated with fluroxypyr) and **Zypar[®]** (formulated with florasulam), will both control fumitory and cleavers. Pixxaro is the best option if you suspect ALS resistant chickweed, and Zypar has the broader weed spectrum including brassicas and mayweed. Both products have a wide window of application and can be applied from three leaves of the crop. For best results apply when weeds are small. To complete the weed spectrum tank mix with an SU herbicide containing thifensulfuron, such as Harmony M. Now is the ideal timing for weed control.

Pixxaro[®] EC
Arylex[™] active
HERBICIDE

Zypar[®]
Arylex[™] active
HERBICIDE





Technical support goes mobile with the new Corteva Arable App

The Corteva Arable App is now live on the [iOS App Store](#) and [Android Play Store](#). You can also find the link on our [website](#).

Free to download, The Arable App gives farmers and advisers specialist technical support about Corteva's crop protection and seed products at their fingertips.

- Use to find product information on arable crop protection and Pioneer oilseed rape and maize hybrids.
- Contains information on rates, species controlled, links to labels and tank mixes.
- Quick access to contact information.

Subscribing to Corteva Agriscience™ Arable Update gives eligibility for 2 Crop Protection BASIS point annually.

Please include course name 'Arable Update' and number 'CP/84239/1920/g' on your training record and send to: linda@basis-reg.co.uk

These details apply until 31 May 2020.

Staying in touch with us during Covid-19



Georgina Clayton



Nicola Perry



Tom Sowerby

We know it's a challenging time for many. If you need technical advice or support, we're here to help. Our teams are all working remotely but contactable on the usual numbers.

Technical hotline: **0800 689 8899** Email: ukhotline@corteva.com

Orders: custserv@corteva.com General enquiries: **01462 457272**

Email: Cortevauk@corteva.com You can also [visit our website](#) for additional contact numbers.

Heartfelt thanks to everyone working flat out to keep agriculture growing in these most challenging of times.

KEEP GROWING.



Discover more at corteva.co.uk

Technical Hotline: 0800 689 8899 E-mail: ukhotline@corteva.com

USE PLANT PROTECTION PRODUCTS SAFELY. Always read the label and product information before use. For further information including warning phrases and symbols refer to label.

Corteva Agriscience™, CPC2 Capital Park, Fulbourn, Cambridge CB21 5XE. Tel: 01462 457272.

®, ™ Trademarks of DuPont, Dow AgroSciences or Pioneer and their affiliated companies or their respective owners. All other brand names are trademarks of other manufacturers for which proprietary rights may exist. Belkar® contains halauxifen-methyl (Arylex™ active) and picloram. Dow Shield® 400 contains clopyralid. Pixxaro® EC contains halauxifen-methyl (Arylex™ active) and fluroxypyr. Zypar® contains halauxifen-methyl (Arylex™ active) and florasulam. All manufacturers tradenames and trademarks are duly acknowledged.